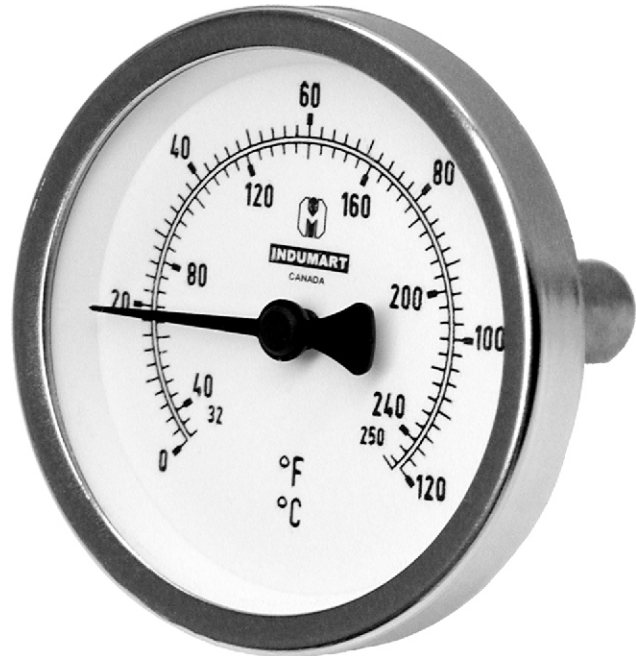


SERIES: T11

Dial: 2", 2½"
Accuracy: 1.6%



DESCRIPTION

Indumart *T11 Series* Standard Bimetal Thermometers are designed for applications, where a low cost and externally adjustable thermometer with short response time is required.

They are mostly used for heating, air conditioning and gas ventilation applications. The temperature sensing element of these thermometers is made of two cold-welded metal strips with different thermal expansion coefficients. Variation of temperature causes a rotary movement of the bimetal strip, and the movement is conveyed to a low-friction pointer to indicate the temperature on the dial.

As a standard feature, the *T11 Series* are fitted in a detachable brass thermowell.

SPECIFICATIONS

Accuracy	1.6%
Dial Sizes	2" (50 mm), 2½" (63 mm)
Case	Galvanized steel (standard) high resistance ABS or aluminium case & bezel (op.)
Window	plexiglas
Connection	½" NPT brass, fixed
Thermowell Stem Dia.	12.5 mm
Stem Length	40, 50, 63 & 100 mm
Zero Adjustment	Yes, at the end of the stem
Max. Operating Press.	600 kPa (87 psi)
Environ. Protection	IP54
Process Temperature	0...120°C / 32...250°F (°C+°F)

ORDER CODES

Model T11 [] - [] - [] - []

CONNECTION
Back

[K]

DIAL SIZE
50 mm (2")
63 mm (2½")

[1]
[2]

STEM LENGTH
40 mm
50 mm
63 mm
100 mm

[1]
[2]
[3]
[4]

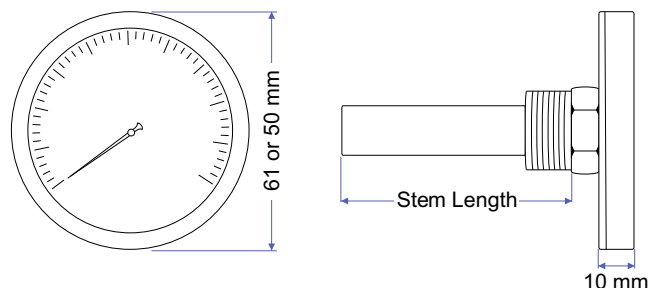
OPTION

Aluminium Case & Bezel (2½" dial only)

ABS Plastic Case & Push-in Window (2½" dial only)

[CA]
[CP]

Example: T11K2-4-CA



Specifications may change without prior notice.