



# SERIES: S31



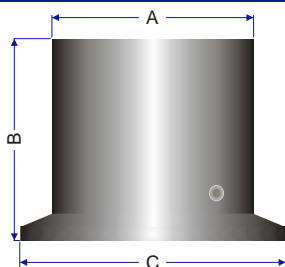
Model	S31-1	S31-2	S31-3
Diaphragm Diameter	32 mm (13 W)	44 mm (17 W)	72 mm (29 W)
Process Connection	1½", 2" & 3" tri-clamp; 1½", 2" & 3" female or male coupling ANSI or DIN standard		
Instrument Connection	¼", ½" NPT or BSP female; welded; Capillary (option)		
Max. Process Press. at 20°C (with tri-clamp)	230 psi (16 bar)	230 psi (16 bar)	150 psi (10 bar)
Max. Process Press. at 20°C (with coupling)	600 psi (40 bar)	600 psi (40 bar)	360 psi (25 bar)
Min. Press. Span for Pressure Gauges	36 psi (2.5 bar)	23 psi (1.6 bar)	7 psi (0.5 bar)
Min. Press. Span for Press. Transmitters	30 psi (2 bar)	18 psi (1.25 bar)	3 psi (0.2 bar)
Min. Press. Span for Diff. Press. Trans.		4.5 psi (0.3 bar)	0.3 psi (0.02 bar)
Max. Capillary Length (m)	6	10	15
Min./Max. Process Temperature in°C	-30...+180°C		

## SPECIFICATIONS

<b>Wetted Parts</b>	316L stainless steel
<b>Upper Body</b>	316L stainless steel
<b>Capillary (option)</b>	316 stainless steel
<b>Armour</b>	Stainless steel with optional protection sleeve of PVC
<b>Standard Tests</b>	Calibration at 20°C; He test
<b>Optional Tests</b>	Dye penetration test for weld; Vacuum & static tests at 20°C
<b>Optional Test Cert.</b>	Calibration test certificate; NACE certificate; Material certificate, Conformity on pressurised parts

## DIMENSIONS (mm)

PROCESS CONNECTION	A	B	C
1½"	38	36	50
2"	52	36	64
3"	82	36	94



## ORDER CODES

**Model S31** - [ ] - [ ] [ ]

### PROCESS CONNECTION

1½" (32 mm diaphragm)  
2" (44 mm diaphragm)  
3" (72 mm diaphragm)

1  
2  
3

### PROCESS MOUNTING

Tri-clamp (Tri-clover clamp)  
Female DIN Coupling  
Female ANSI Coupling  
Male DIN Coupling  
Male ANSI Coupling

A  
B  
C  
D  
E

### INSTRUMENT CONNECTION

¼" female NPT  
¼" female BSP  
¼" welded  
½" female NPT  
½" female BSP  
½" welded  
Capillary (consult Indumart Inc. for specifications)

1  
2  
3  
4  
5  
6  
C