



## SERIES: P76

**Dial:** 4½", 6"

**Accuracy:** 2%

### APPLICATIONS:

Monitor air handling units  
Monitor Fan & blower press.  
Monitor filter pressure drop  
Orifice plate pressure drop  
Level measurement  
Spinning machines



## SPSTs or SPDT Alarm Contacts (option)

### DESCRIPTION

INDUMAG (P76 Series) Differential Pressure Gauges are designed to display the pressure differential of two separate pressure inputs on a dial indicator. They are based on magnetic coupling principle, where the indicating mechanism is isolated from the pressure chamber. High and low pressures are separated by a sensor assembly consisting of a magnet and a range spring. The difference in pressure causes the assembly to move in proportion to the change against the range spring. A rotary magnet located in a separate body compartment and isolated from the acting pressure is rotated by magnetic coupling as per the linear movement of the sensor assembly. A pointer attached to the rotary magnet indicates differential pressure on the dial.

These Precision instruments are designed for use in air handling units, HVAC, pharmaceutical and medical equipments. They also finds applications in level, flow and filter resistance measurement. Being compact, lightweight, reliable and cost effective are definite advantages of INDUMAG Differential Pressure Gauges.

INDUMAG is available in two dial sizes with accuracy of  $\pm 2\%$  and covers ranges from 0-25 to 0-1250 mmH<sub>2</sub>O of differential pressure.

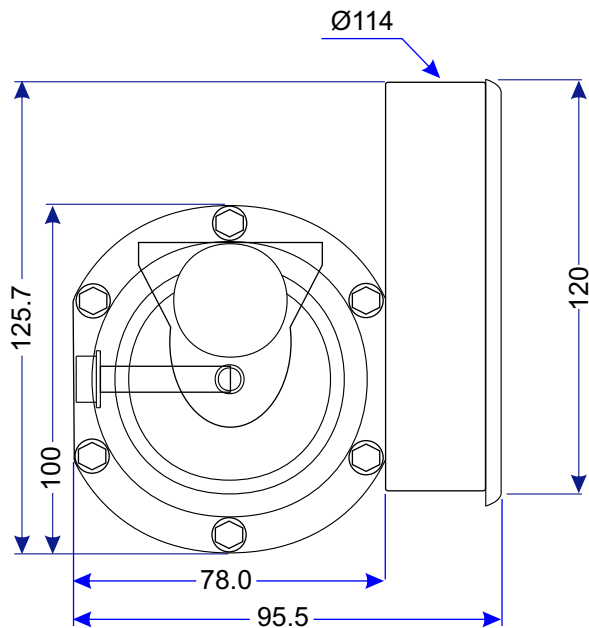
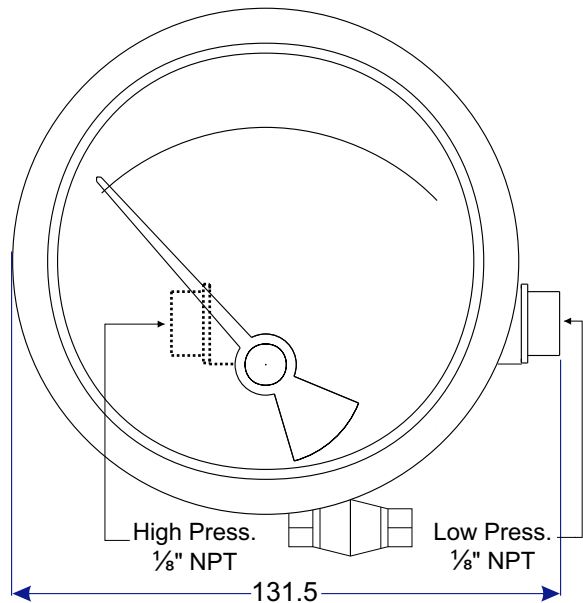
For switching action, these gauges can be equipped with one SPDT or up to two SPST relays for high and low limits, and they may be mounted directly to the pressure ports, mounted to a pipe or on the panel surface.

### SPECIFICATIONS

<b>Accuracy</b>	$\pm 2\%$ of full scale dial
<b>Dial Size</b>	4½" (112 mm), 6" (150 mm)
<b>Range</b>	0...25 to 0...1250 mmH <sub>2</sub> O; 0...1 to 0...50 in.H <sub>2</sub> O Other ranges and units on request.
<b>First Marking on Scale</b>	15% of full scale
<b>Migration of Media</b>	None; Zero leakage from high to low port
<b>Body Material</b>	Engineering polymer
<b>Sensing Element</b>	Diaphragm
<b>Seal/Diaphragm</b>	Buna-N
<b>Wetted Parts</b>	Body material, 304SS spring and ceramic magnet
<b>Dial Case</b>	Stainless steel
<b>Connection</b>	In-line or back (user to select)
<b>Thread</b>	½" NPT or BSP female
<b>Window</b>	Glass (std), acrylic, hard glass
<b>Mounting</b>	Direct & Flush (standard); Surface and 2" pipe (option)
<b>Switch</b>	1 or 2 SPST with DIN plug; 1 SPDT with DIN plug Adjustable in 40-80% of FS
<b>SPST</b>	10 VA maximum (AC or DC) 150 VAC or VDC max. 0.5 Amp. AC or DC max.
<b>SPDT</b>	5 VA maximum (AC or DC) 175 VAC or VDC max. 0.25 Amp. AC or DC max.
<b>Media Temperature</b>	60°C / 140°F maximum
<b>Environ. Protection</b>	IP65 for the gauge & switch
<b>Max. Pressure Input</b>	35 psi (2.4 bar)

## DIMENSIONS (mm)

### STANDARD CASE



## ORDER CODES

**Model P76**   -

### CONNECTION

In-line (standard)  
Back

L  
K

### DIAL SIZE

4 1/2" (112 mm) (standard)  
6" (150 mm)

5  
6

### FUNCTION

Gauge (standard)  
Gauge + Switch (option)

G  
W

### CONNECTION

1/8" NPT female (standard)  
1/8" BSP female

N  
B

### WINDOW

Glass (standard)  
Acrylic  
Hard Glass

G  
A  
H

### REED SWITCH (option)

None  
One SPST Switch  
Two SPST Switches  
One SPDT Switch

0  
1  
2  
3

Please specify the required range from the standard range table.

Specifications may change without prior notice.

## STANDARD RANGES

0...25 mmH <sub>2</sub> O	0...1 in.H <sub>2</sub> O
0...50 mmH <sub>2</sub> O	0...2 in.H <sub>2</sub> O
0...75 mmH <sub>2</sub> O	0...3 in.H <sub>2</sub> O
0...100 mmH <sub>2</sub> O	0...4 in.H <sub>2</sub> O
0...125 mmH <sub>2</sub> O	0...5 in.H <sub>2</sub> O
0...150 mmH <sub>2</sub> O	0...6 in.H <sub>2</sub> O
0...200 mmH <sub>2</sub> O	0...8 in.H <sub>2</sub> O
0...250 mmH <sub>2</sub> O	0...10 in.H <sub>2</sub> O
0...375 mmH <sub>2</sub> O	0...15 in.H <sub>2</sub> O
0...500 mmH <sub>2</sub> O	0...20 in.H <sub>2</sub> O
0...750 mmH <sub>2</sub> O	0...30 in.H <sub>2</sub> O
0...1000 mmH <sub>2</sub> O	0...40 in.H <sub>2</sub> O
0...1250 mmH <sub>2</sub> O	0...50 in.H <sub>2</sub> O



**INDUMART** INC.

1-15 W. Pearce St., Richmond Hill, Ont. L4B 1H6, Canada  
Phone: (905) 707-9998 Fax: (905) 707-8484 E-mail: Sales@Indumart.com