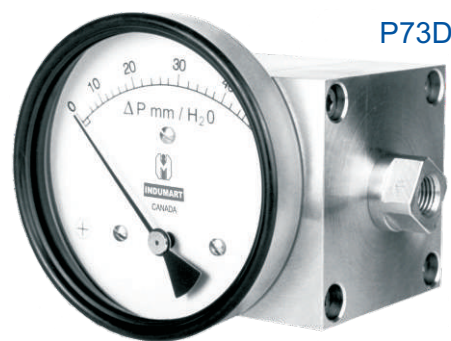


SERIES: P73

Dial: 2½", 3¼", 4", 4½", 6"

Accuracy: 2%

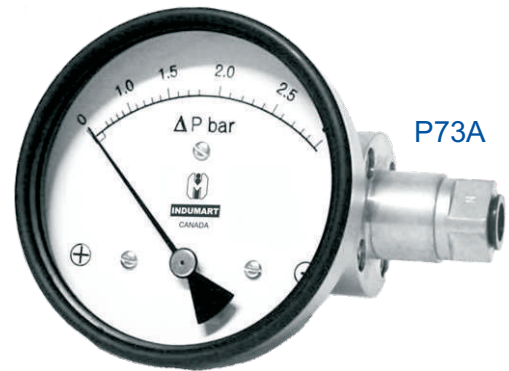
Reed Alarm Contacts (option)



P73D



P73B



P73A

DESCRIPTION

Indumart *P73 Series* Diaphragm Type Differential Pressure Gauges are designed to display the pressure differential of two separate pressure inputs on a dial indicator.

For switching action, these gauges can be equipped with Reed switches to initiate alarms or to control the process. Up to two SPDT or SPST relays may be installed for high and low limits.

Models "A" and "B" may be filled with glycerin to ensure smooth pointer movement and to protect the moving parts against wear.

Indumart *P73 Series* are mostly used for monitoring filters, pumps and valves in the water, air, natural gas and gasoline systems, and also for measuring flow rates with venturi, orifice or pitot tubes. As standard, they are suitable for direct mounting, while models "A" and "B" may be ordered with a bracket for pipe or surface mounting.

SPECIFICATIONS

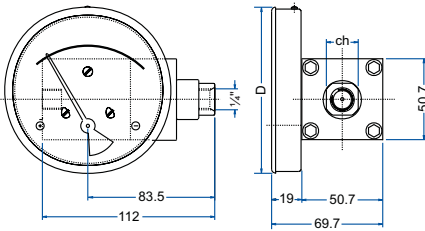
| | |
|----------------------------|--|
| Accuracy | ±2% of full scale dial |
| Body Material | St. Steel, aluminum; |
| Wetted Parts | Body material, 304SS spring, PTFE, ceramic magnet |
| Dial Case | St. steel case and flange |
| Seal | Buna-N (std), Viton (option) |
| Window | Glass (std), acrylic, hard glass |
| Switch | One or two SPST or SPDT; Field adjustable from 20% to 90% of the range |
| SPST | 10 VA maximum (AC or DC) 50 VAC or 100 VDC max. 0.5 Amp. AC or DC max. |
| SPDT | 3 VA maximum (AC or DC) 28 VAC or 28 VDC max. 0.25 Amp. AC or DC max. |
| Media Temperature | 80°C / 175°F maximum |
| Environ. Protection | IP65 for the gauge & switch |
| Migration of Media | None |

Specifications may change without prior notice.

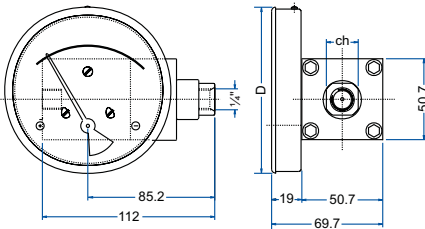
| Model | P73A | P73B | P73D |
|-----------------------------|---|--|--------------------------|
| Range | 0...5 to 0...100 psi | 0...30 In.H2O to 0...60 psig | 0...25 to 0...600 mmH2O |
| Measurement Units | kg/cm ² , mbar, mmH2O, In.H2O, psi | kg/cm ² , bar, mbar, kPa, psi | mmH2O, mbar, In.H2O, kPa |
| Max. Static Pressure | 3000 psi / 200 bar | 1500 psi / 100 bar | 500 psi / 35 bar |
| Dial Size | 2½", 3¼", 4", 4½", 6" | | 3¼", 4", 4½", 6" |
| Liquid Filling | Glycerine-filled (option) | | No liquid filling |
| Porting | In-line (sides), back, bottom | | |
| Connection | ¼" female NPT or BSP | | |

DIMENSIONS (mm)

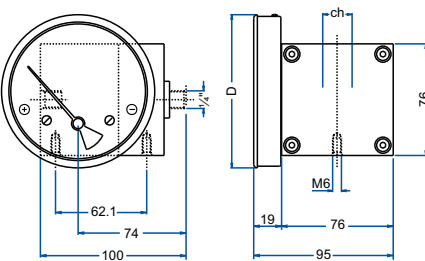
Standard Case - Model P73A



Standard Case - Model P73B



Standard Case - Model P73D



| Dial | 2½" | 3¼" | 4" | 4½" | 6" |
|------|-----|-----|-----|-----|-----|
| D | 66 | 83 | 104 | 120 | 154 |
| ch | 20 | 20 | 20 | 20 | 20 |

Standard Ranges - Model P73D

| | | | | | |
|---------------------|------|-----|------|-----|-----|
| mmH ₂ O | 25 | 50 | 125 | 250 | 600 |
| IN.H ₂ O | 1 | 2 | 5 | 10 | 25 |
| mbar | - | 5 | - | 25 | 60 |
| kPa | 0.25 | 0.5 | 1.25 | 2.5 | 6 |

Standard Ranges - Model P73A

| | | | | | | | | | | | |
|--------------------|------|---|-----|------|-----|----|-----|-----|----|-----|-----|
| kg/cm ² | 0.25 | - | 0.5 | 0.75 | 1 | - | 2 | 2.5 | - | 4 | 7 |
| bar | 0.25 | - | 0.5 | 0.75 | 1 | - | 2 | 2.5 | - | 4 | 7 |
| mbar | 250 | - | - | 750 | - | - | - | - | - | - | - |
| psi | - | 5 | 7 | - | 15 | 25 | 30 | - | 40 | 60 | 100 |
| kPa | 25 | - | 50 | 75 | 100 | - | 200 | 250 | - | 400 | 700 |

Standard Ranges - Model P73B

| | | | | | | | | | | | | | |
|--------------------|-------|------|---|-----|------|-----|----|-----|-----|-----|-----|----|-----|
| kg/cm ² | 0.075 | 0.25 | - | 0.5 | 0.75 | 1 | - | 1.6 | 2 | 2.5 | 3 | - | 4 |
| bar | 0.075 | 0.25 | - | 0.5 | 0.75 | 1 | - | 1.6 | 2 | 2.5 | 3 | - | 4 |
| mbar | 75 | 250 | - | - | 750 | - | - | - | - | - | - | - | - |
| psi | 1 | - | 5 | 8 | - | 15 | 20 | 25 | 30 | - | 40 | 50 | 60 |
| kPa | - | 25 | - | 50 | 75 | 100 | - | 160 | 200 | 250 | 300 | - | 400 |

ORDER CODES

Model P73

TYPE

Rolling Diaphragm
Small Diaphragm
Low Pressure

A
B
D

CONNECTION

In-line (standard)
Back
Bottom

L
K
T

DIAL SIZE

2½" (63 mm) not for model "D"
3¼" (80 mm)
4" (100 mm)
4½" (115 mm)
6" (160 mm)

2
3
4
5
6

FUNCTION

Gauge
Switch
Gauge + Switch

G
S
W

BODY MATERIAL

Aluminum (Anodized)
316 St. Steel

A
S

CASE

304 St. Steel (standard)
304 St. Steel (standard flange)

S
F

CONNECTION

NPT female
BSP female

N
B

WINDOW

Glass (standard)
Acrylic
Safety Glass

G
A
S

SEALS

Buna N (standard)
Viton

B
V

REED SWITCH (not available for back or bottom connection units)

None
One SPST Switch
Two SPST Switches
One SPDT Switch
Two SPDT Switches (not available for model P73D)

0
1
2
3
4

LIQUID FILLING

Not required
Glycerine filled (not available for model P73D)

D
F

Please specify the range from the Tables.

**Other ranges
are available,
on request.**