

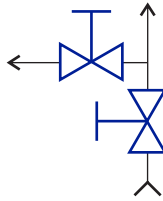
**INDUMART** Canada

www.indumart.com

2-Valve Manifolds (Direct or Remote Mounting)

SERIES: V2

- FULL ISOLATION
- BLEED OR VENT PORT
- PTFE OR GRAFOIL PACKING
- 6000 psi CWP - SEE THE DIAGRAM
- LIQUID, STEAM, GAS & VACUUM SERVICES



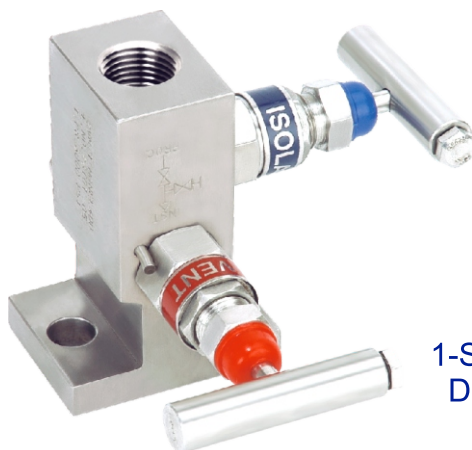
Indumart 2-Valve Manifolds are used in fluid pressure applications. They are connected to the process and to the pressure instruments directly or via tubing or piping. They have one 1/2" isolating valve and one vent or drain valve with 1/4" female outlet. Other connections may be ordered as special.

These manifolds can be made of stainless steel or carbon steel with PTFE or Grafoil packing. They are suitable for both positive and negative pressures in liquid and gas services. Their important applications are with pressure gauges, pressure transmitters and switches.

Remote Mount

**V2R2-M****V2R2-F****V2D1**

Direct Mount

**V2T1**

1-Side Flanged Direct Mount

SPECIFICATIONS

Max. Working Pressure	6000 psi (400 bar)
Maximum Temperature	240°C (PTFE), 500°C (Grafoil)
<i>See the pressure/temperature graph on page 2 for the correct selection.</i>	
Gland Packing	PTFE (std.), Grafoil (option)
Process Connection	1/2" NPT (std.)
Instrument Connection	1/2" NPT (std.) or Direct flange
Vent Valve (option)	1/4" NPT (as shown in the picture)

See manufacturing and testing standards, raw material and material certificates on page 2. Specifications may change without prior notice.

ORDER CODE

Model: V2 - - -

MOUNTING

Remote
Direct
Direct, 1-side flanged

R2
D1
T1

PROCESS INPUT

Male (for remote model only)
Female

M
F

BODY MATERIAL

316 St. Steel (std.)
304 St. Steel
Carbon Steel

6S
4S
CS

GLAND PACKING

PTFE (std.)
Grafoil (option)

-
G

* other sizes and threads may be ordered as special.